



PRIVATE  
SOMERLEYTON







# THE SOMERLEYTON ESTATE

*On the leafy border of Norfolk and Suffolk, the glorious Somerleyton Estate lies just three hours drive from London.*

At its heart is the spectacular Somerleyton Hall. Renowned as one of the finest stately homes in the country, the building you see today was created when Victoria was still on the throne. It was shaped by her husband's chief sculptor and architect, John Thomas, and celebrated garden designer to the aristocracy, William Andrews Nesfield. Previous incarnations include a Jacobean mansion, a Tudor house, and a Saxon freehold.



## AROUND THE GROUNDS

For over three hundred years the Somerleyton gardens have been considered some of the finest in the region. There is so much to see, from the Nesfield Parterre and its equatorial sundial centrepiece to the sunken white garden north of the hall. There is also an enchanting yew hedge maze, which has been disorientating and delighting visitors since Victorian times. Guests can also cool off from a sunny day exploring the lawns and parkland in its unique wild freshwater swimming pool.



## SOMERLEYTON ON SCREEN

The Hall's spectacular nature has seen it used as a setting for many television shows and films including Stephen Poliakoff's *The Lost Prince* and Netflix's hit series *The Crown* where it was used to depict the Royal Norfolk residence Sandringham which shares much of the same architecture.



## LOVE THE LAKE

The centrepiece of the Somerleyton Estate is the two-mile-long Fritton Lake and home to its private members club. This beautiful stretch of open water is perfect for all kinds of water-based activities, including wild swimming, paddleboarding, canoeing and relaxing in the nordic designed Koto floating sauna.





## GIVING BACK TO NATURE

A conservation project to return over 1,000 acres of farmland to the wild. Since 2017 Somerleyton has been carefully managing the return of vast swathes of estate land to sustainable wildland. What was once a patchwork of farmed fields is now a nature restoration project roamed by deer, cattle, water buffalo, sheep and ponies. Dozens of bird species once again make their home here, and rare plants and shrubs thrive once more. The estate team loves to share the work we are doing with guests, so make sure you include a Jeep or Lake Safari in your itinerary or a guided foraging walk and see how the landscape is transforming.

Our commercial farming enables the estate to invest in nature restoration, but it has to be regenerative, putting back more into the soil than we take out. Similarly, the species we have reintroduced, whether wild or farmed, are essential to eco-restoration. Their actions and natural behaviours are perfect for reshaping the land back to the way nature intended it while providing an abundance of high-quality locally sourced produce for use in our kitchens.





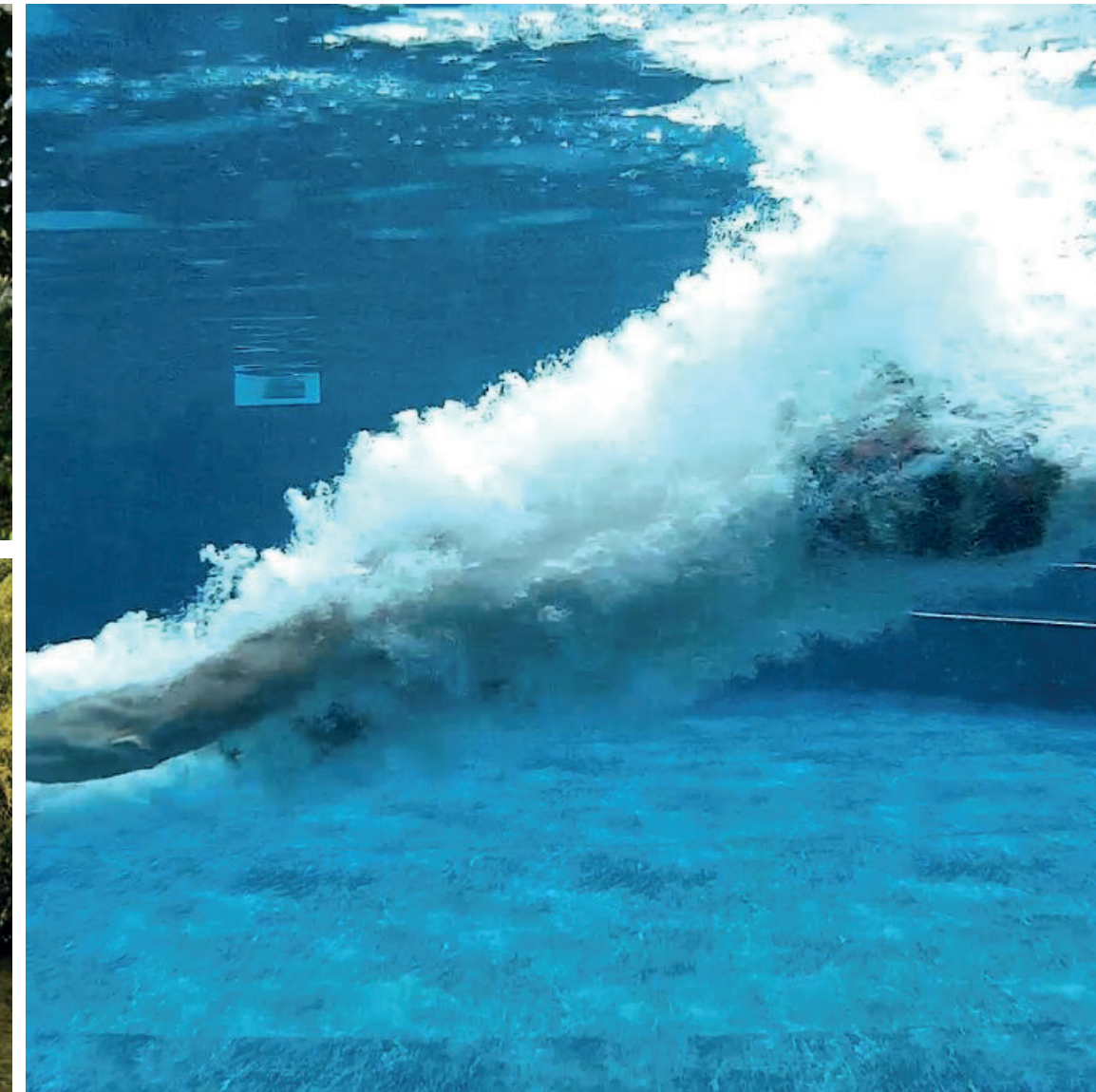
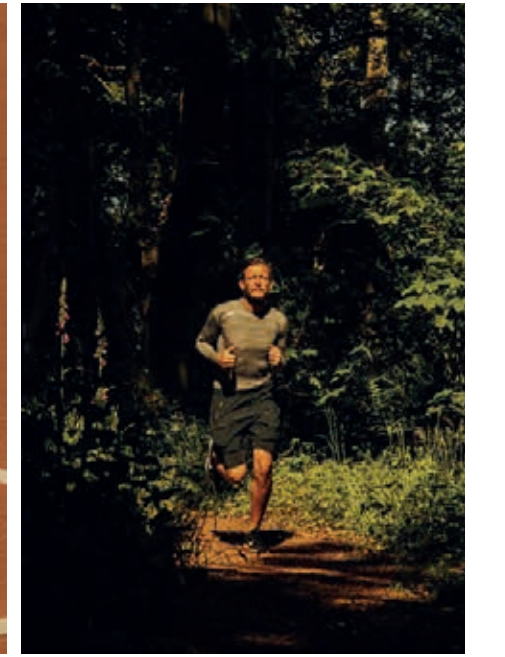
## ESCAPE THE EVERYDAY

Somerleyton has created a luxury escape, offering the best accommodation, food, hospitality, sport and recreation built around its natural environment. It's a haven not just for wildlife, but for busy modern life as well.

Guests can enjoy some sets on grass and clay tennis courts, a work out in our biogym and wild swimming in our lake. Runners will love the trails which wind their way through the woods and around the lake, while youngsters can climb, swing, bounce and slide to their heart's content on our outdoor play area.

If you want to try some traditional countryside pursuits such as shooting then Somerleyton has an expert leisure team who will be happy to arrange it for you. There are also several stables available, so horse owners are welcome to bring their equine companions or we can organise horses for you to explore the local area from the saddle.

Group entertainment is found on the grass of our croquet lawn and petanque court. And for social occasions the outdoor heated pool is the place to be, whether you've taken the plunge into its heated waters or are just relaxing around the edge.





## HANDMADE EXPERIENCES

**H**ospitality flows naturally at Somerleyton, from the team of butlers and household staff on hand to attend to your every need, and from Hugh and Lara Somerleyton themselves.

There is a dazzling array of spaces for you to enjoy within the Hall - the sumptuous candlelit ballroom, the splendour of the old palm house, the intimacy of the family dining room and the fabulous Winter Gardens. From wild birthday parties to Indian weddings and corporate retreats, we have hosted any number of special occasions, and have the experience and abilities to provide an unforgettable time, whatever your requirements.





## A FEAST FOR THE SENSES

When it's time to dine, you'll be able to choose your meals from tempting menus conjured up by our expert chefs. Food at Fritton Lake is created by Fat Duck alumnus Chris Bartlett, who works in tandem with the seasons and estate produce to create unforgettable menus. As with everything at Somerleyton, provenance and sustainability is key, so our chefs only use ingredients from the estate, produce from carefully selected local suppliers and fresh fish brought to shore just a few miles from the resort.



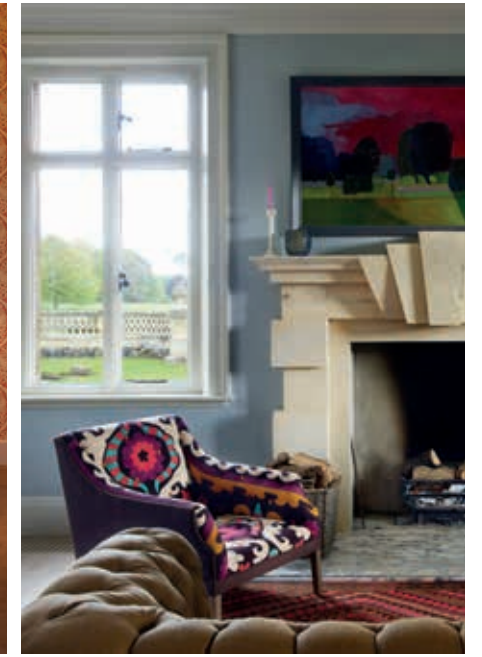


## ACCOMMODATION TO SUIT YOU

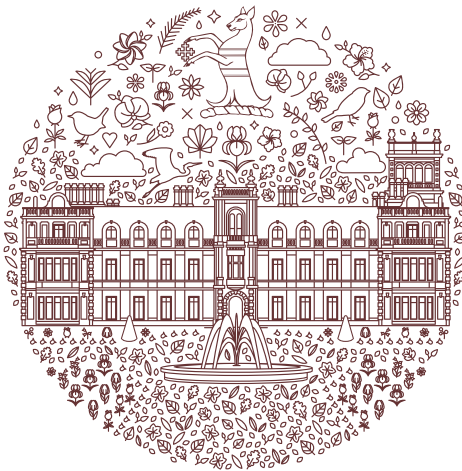
For the ultimate glamour getaway it has to be Somerleyton Hall. Available to hire privately, it has twelve exceptional bedrooms, full of character and charm. Each has been individually, lovingly designed and comes with its own personality. Expect four poster beds, roll top clawfoot baths, ornate furnishings and spectacular views across the grounds when you come to stay. Larger parties of 30+ can be accommodated using the apartment in the stable yard and the accommodation at the private members club.

If you require more space for your group, we have Koto self-catering cabins dotted throughout the woodland and meadows which surround Fritton Lake. Designed to work in harmony with their natural surroundings these are the ultimate in secluded luxury.

We also have eight luxury hotel rooms at The Clubhouse at Fritton Lake. Once a 16th century manor house, its heritage is easy to see. From the authentic wooden floorboards and real fireplaces to the exposed beams and brickwork, these all blend seamlessly with modern comforts and contemporary design to give you an unforgettable experience.







PRIVATE  
SOMERLEYTON

[private-hire@somerleyton.co.uk](mailto:private-hire@somerleyton.co.uk) / 07925 566322 / [privatesomerleyton.co.uk](http://privatesomerleyton.co.uk)